

DC170

High-Definition Document Camera

Lumens™
Brighter Teaching

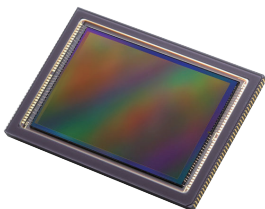
The Lumens™ DC170 document camera is equipped with a specialised 2x optical lens and a professional image sensor that delivers vivid colours at high-definition Full HD 1080p output resolutions with 30 frames per second, it transmits a streaming image smoothly in real time without delays. The internal memory stores up to 120 images and is expandable to 32GB using a standard SD card memory device. One-touch video recording allows you to record presentations stand-alone without the need for a PC. Our no joints, highly flexible gooseneck enables a 360° viewing angle and object viewing from just 4 cm to observe an objects finer detail. The adjustable side lamp design prevents reflections. Press one button to get the perfect image quality every time. The Lumens DC170 makes presentations and teaching more interactive and attractive.

Main Feature

- Full HD 1080p Output Resolution
- High Speed 30fps Dynamic Image
- VGA Output/HDMI Output
- Professional 2x optical zoom
- Superior sensor delivery a crystal image quality
- Built-in Microphone
- One-Touch synchronous audio/ video recording
- Built-in SD card slot, expandable to 32GB
- Hands Free Auto Focusing
- No Joint, Highly Flexible Gooseneck
- Plug and Play
- Unique Image Optimization-Auto Tune
- Innovative Built-in power supply
- Compatible with All Major Brands of Whiteboard



More Details



Excellent Image Quality

Equipped with a professional image sensor with low noise and vivid colour reproduction. It supports extremely high definition Full HD 1080p, SXGA, and varies signal formats for crystal-clear image.



Video / Audio Recording and Extra Storage

With a built-in microphone and just one-button to record video and audio synchronously on board directly without a PC. The SD card storage (expandable to 32GB) is convenient to record training, meetings, seminars, lectures.



Hands Free AF

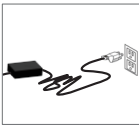
Intelligent continuous focusing adjusts the focus automatically and quickly to ensure the best image quality without any distraction.

HDMI

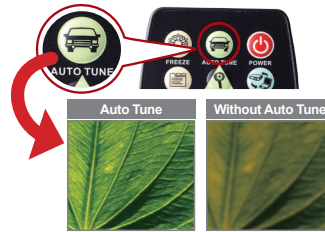


HDMI Interface

Utilize a standard HDMI interface for the highest quality digital video transmission, and simplify system integration.

Built-in Power**External Power****Built-in Power**

With a much more stable power supply and less things to detach you can be sure of a constant image and data flow.

**Auto Tune**

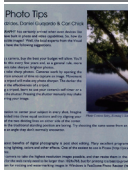
With the convenient single button to adjust the clarity, brightness, and colour according to the actual environment automatically.

30 fps**< 24 fps****Extremely Smooth Dynamic Image**

With 30 fps capture every tiny movement during playback without delays. Even flapping insect wings can be clearly observed in great detail.

**Joint-free Gooseneck**

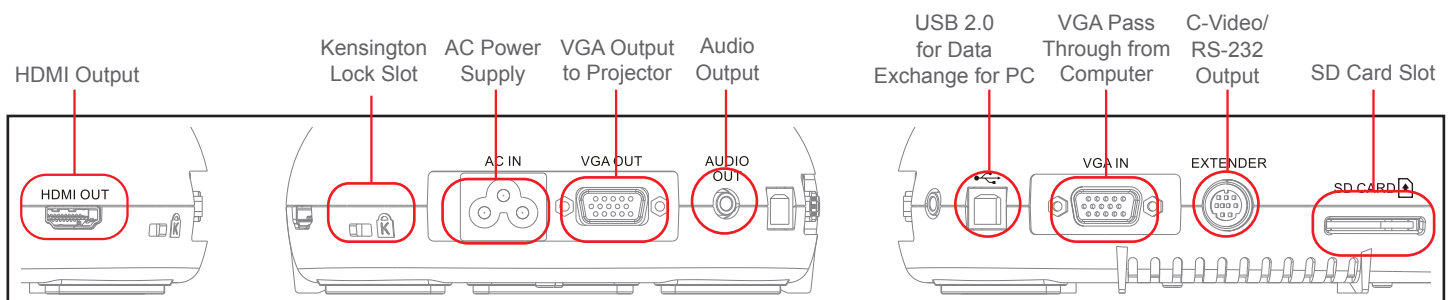
Highly flexible and joint-free gooseneck design ensures smooth quality without vibration, easy to use, and 360° viewing angle.

No Reflection**Reflection****Anti-Reflection**

With the Lumens™ side lamp gooseneck design, the direction of the light source can be adjusted according to the environment to prevent reflections.

Specifications

Optical Zoom	2x (pixel zoom)	USB Image Transmission	USB 2.0 (480 Mbps) high speed transmission
Mechanical Zoom	10x	Video/Audio Recording	One Touch, record image and sound synchronously
Frame Rate	30 fps	Built-in Microphone	Yes
Shooting Area Max.	442 x 331 mm (17.4" x 13") > A3 size	Image Capture	Single or continuous capturing
Output resolution	XGA, SXGA(1280x960), WXGA, 1080p	Auto Tune	Yes, one button for optimisation image
Close-up	4 cm	Image Rotation	0°, 180°, Flip, Mirror
Lamp	LED side lamp supported by gooseneck	Anti-Theft	Kensington anti-theft lock device
Power Supplied	Internal Power Supply, 100-240VAC	Free Lumens™ Software	Support PC Windows 7, XP, Vista and Mac OSX ; WIA & TWAIN interface

User Interface

Lumens™
Brighter Teaching

Lumens Integration, Inc.
4116 Clipper Court
Fremont, CA, 94538
Phone : 615 530 7236
F a x : 510 252 1389
<http://www.MyLumens.com>

Lumens Europe
Stationstraat 5
1730 Asse, Belgium
Phone : +32 (0) 2 452 76 00
F a x : +32 (0) 2 452 76 00
<http://www.lumenseu.com>