



CHALLENGER®



FY-2030 series

2M × 3M print width, UV Flatbed printer UV flatbed, high productivity at high times

FY-2030 series



Industrial printhead with long life span and high production.



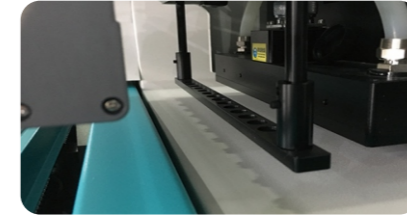
Equipped with Static Remove Device, which can effectively avoid the ink from floating because of static electricity, ensuring printing quality.



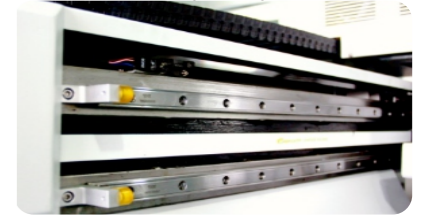
LED water-cooling curing system, which is more convenient in use and better in curing, with longer service life, less energy consumption and more environmentally friendly.



Schneider brand electric equipment, electrical accessories of international famous brand are safer and more reliable and longer in service life.



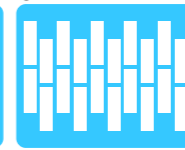
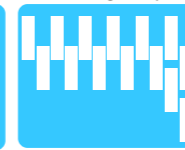
New generation of Crash-Sensor System can effectively protect print head from physical during the printing.



THK silent dual rail structure, featuring speed and silence, more stable during the operation process of carriage moving to provide higher printing accuracy.

Printhead Options

SPT1024GS
CE4M
G5 / G6



SPT 1024GS

CE4M

G5 / G6

Technical Specifications

Model	FY-2030G				FY-2030R				
Printhead	SPT 1024GS				G5				
Print width	2000mm x 3000mm								
Printhead configuration	one-row 4 heads @ 4 colors	two-row 8 heads @ 4 colors	3-row 12 heads @ 4 colors	4-row 16 heads @ 4 colors	one-row 2 heads @ 4 colors	two-row 4 heads @ 4 colors	3-row 6 heads @ 4 colors	4-row 8 heads @ 4 colors	
Print Speed *	4PASS	19.2m ² /h	35.8m ² /h	51m ² /h	74m ² /h	14.1m ² /h	28.1m ² /h	42.7m ² /h	55.3m ² /h
	6PASS	13m ² /h	24.9m ² /h	37m ² /h	51m ² /h	18.9m ² /h	18.9m ² /h	26.6m ² /h	35.9m ² /h
	8PASS	10m ² /h	18m ² /h	29m ² /h	41m ² /h	14m ² /h	14m ² /h	20m ² /h	27m ² /h

Weight & Thickness: 75KG/m², Max.100mm

Type: wood, densiyboard, glass, metal, sheet, chevron board, PVC, Acrylic plate, ceramic tiles...

Ink: UV Curable Ink

Ink supply system: Negative pressure ink supply

Curing method: LED water-cooling curing

RIP: United Fancy

Print Interface: USB 3.0

Printer: AC220V 50HZ 1000W

Print Platform Vacuum Hold Down Area: AC220V 50HZ 4400W

Operation Environment: Temperature 20°C-28°C Humidity 40%-60%

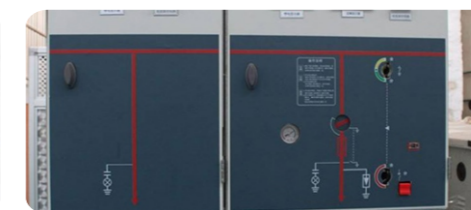
Printer Dimensions: L3965mm×W4250mm×H1460mm 1710kg

Package Size: Printer Frame: L4100mm×W2255mm×H1350mm 2220kg
Gantry: L4100mm×W760mm×H1020mm

1. The speed data are taken from the printer at high speed, a difference of 10% may occur when running with different computers.
2. Product specifications are subject to change without notice in advance. Color and shape in picture are for reference, computer and monitor not included. All rights reserved!



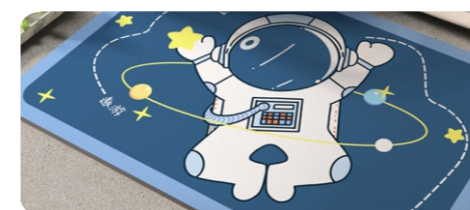
Advertising industry



Labelling Printing



Cosmetics Items



Interior



Daily Commodities



Cosmetics