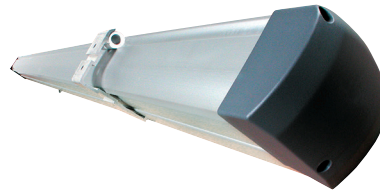


# DYNAMIC ELECTROL

Motorized projection screen for wall or ceiling installations

**PROJECTA**  
REFLECTING YOUR VISION



## Product specifications:

- Electrically operated projection screen 230 volt (50Hz) with a usage of no more than 0.53 Ampere (121.9 Watt)
- Anodized aluminum case with grey end caps
- The motor is mounted inside the roller, 4 wire, 26 rotations per minute, maintenance free, integrated brake and thermal overload cut-out.
- The 4 wire connection is integrated into the end cap and can be connected to the electric installation with the connector and standard cable.
- Suitable for wall or ceiling mounting with the supplied mounting brackets which can be positioned within 50cm of either side of the case.
- The front projection screen fabrics are flame retardant and seamless in the viewing area. Rear projection will have seamless fabric up to a height of 240 cm. The seam in the rear projection screen surface may be slightly visible under projection.
- The projection fabrics have a 5 cm. border all around with the Video, HDTV, and Wide format. The standard format (1:1) will be borderless.
- The projection fabrics have a black backing.
- Standard 3 position wall switch is supplied.
- The projection screen is CE marked and satisfies the strictest quality and safety requirements.

## Options:

- Without borders



## Aspect Ratios:

16:10

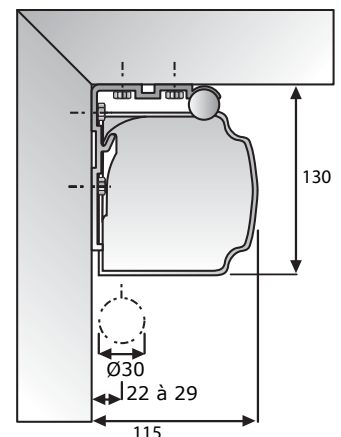
16:9

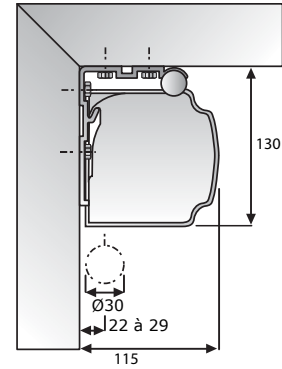
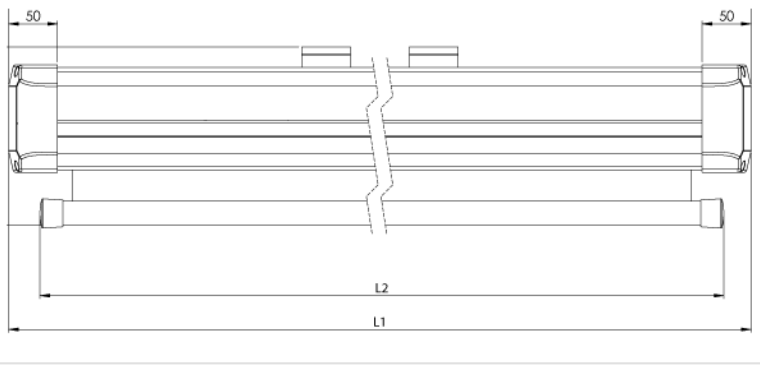
4:3

1:1

## Available dimensions

Minimum width: 180 cm  
Maximum width: 300 cm





		Viewing Area	Dimensions		Border	Net weight
		cm	L1 mm	L2 mm	cm	kg
16:10	112 x 178	108 x 173	1920	1860	5	13
	126 x 198	121 x 193	2120	2060	5	14
	151 x 238	146 x 233	2520	2460	5	15
	188 x 298	183 x 293	3120	3060	5	19
16:9	102 x 178	97 x 173	1920	1860	5	13
	114 x 198	109 x 193	2120	2060	5	14
	136 x 238	131 x 233	2520	2460	5	16
	170 x 298	165 x 293	3120	3060	5	19
4:3	135 x 178	130 x 173	1920	1860	5	13
	150 x 198	145 x 193	2120	2060	5	14
	180 x 238	175 x 233	2520	2460	5	16
	225 x 298	220 x 293	3120	3060	5	20
1:1	158 x 158	158 x 158	1720	1660	0	12
	178 x 178	178 x 178	1920	1860	0	13
	198 x 198	198 x 198	2120	2060	0	14
	238 x 238	238 x 238	2520	2460	0	17
	298 x 298	298 x 298	3120	3060	0	22

## Certifications

- Products are manufactured in an ISO14001 certified facility
- Projecta is an ISO 9001 certified company
- REACH - Registration, Evaluation, Authorisation and Restriction of Chemical substances.
- RoHS - Restriction of Hazardous Substances.
- WEEE - Waste Electronic and Electrical Equipment Regulations.



## Customisation

Give exact the sizes of the projection screen you need:

Viewing size: \_\_\_\_\_ Height (cm.) x \_\_\_\_\_ width (cm.)

Surface: \_\_\_\_\_ Border top: \_\_\_\_\_ (cm.) Border bottom: \_\_\_\_\_ (cm.)

RAL color case and plastic parts: RAL \_\_\_\_\_

Motor positioned on right side

Screen fabric mounted reversely

Remarks: \_\_\_\_\_

## Available standard resolution projection surfaces

All front projection screen surfaces are seamless in the viewing area.

### Matte White

Gain: 1.0  
Viewing Angle: 120°  
Base material: Fiberglass  
Fire retardancy: B2  
Black backing: Yes  
Opacity rating: > 99 %  
Seamless: Yes  
GreenGuard certification: Yes

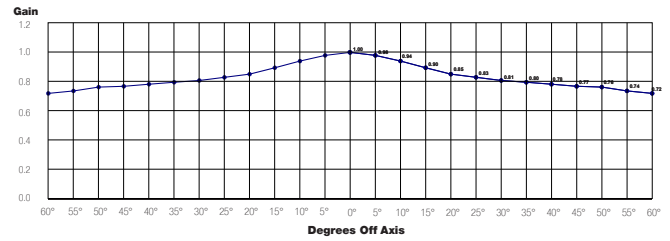


**Standard:** UL 2818 - 2013  
Standard for Chemical Emissions  
for Building Materials, Finishes and  
Furnishings

**Certification number**

Greenguard -  
4710-410

Greenguard Gold -  
4710-420



### Datalux

Gain: 1.5  
Viewing Angle: 70°  
Base material: Fiberglass  
Fire retardancy: B2  
Black backing: Yes  
Opacity rating: > 99 %  
Seamless: Yes  
GreenGuard certification: Yes

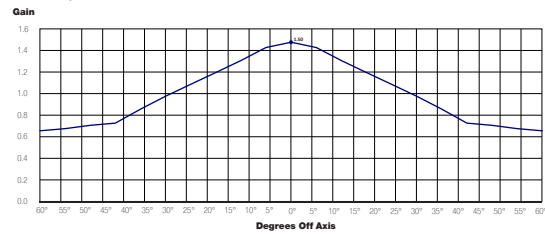


**Standard:** UL 2818 - 2013  
Standard for Chemical Emissions  
for Building Materials, Finishes and  
Furnishings

**Certification number**

Greenguard -  
4712-410

Greenguard Gold -  
4712-420



### High Contrast

Gain: 1.1  
Viewing Angle: 100°  
Base material: Fiberglass  
Fire retardancy: B2  
Black backing: Yes  
Opacity rating: > 99 %  
Seamless: Yes  
GreenGuard certification: Yes

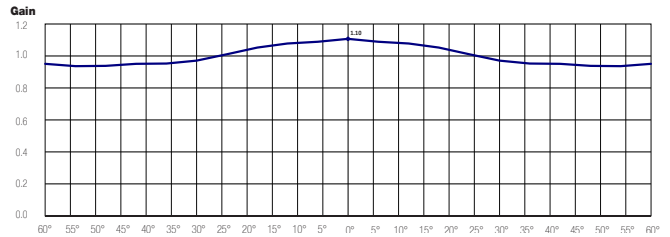


**Standard:** UL 2818 - 2013  
Standard for Chemical Emissions  
for Building Materials, Finishes and  
Furnishings

**Certification number**

Greenguard -  
4708-410

Greenguard Gold -  
4708-420



### Retrotex (rear projection)

Gain: 0.5  
Viewing Angle: 60°  
Base material: Vinyl  
Fire retardancy: B2  
Seamless: No  
GreenGuard certification: No

## Accessories - control options

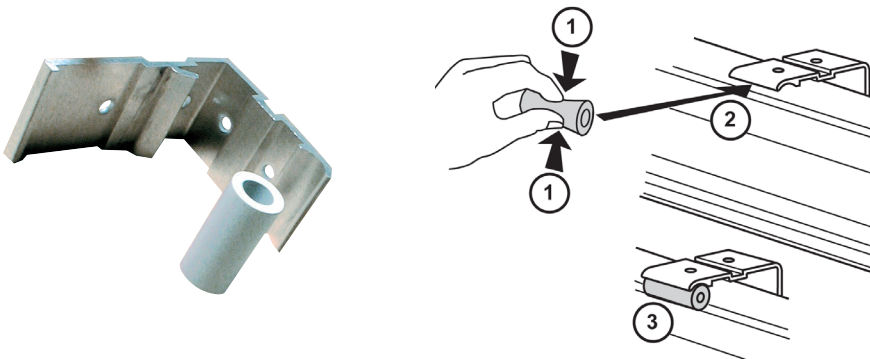
For projection screens with a standard motor / delivered as standard with a wall switch

- Easy Install RF remote control (868,3 Mhz)
  - Easy Install wireless projectorcoupling (868,3 Mhz)
  - Easy Install wireless RF wall switch (868,3 Mhz)
- Easy Install RF remote control with projectorcoupling (868,3 Mhz)
- Easy Install projectorcoupling with cable
- Easy Install IR remote control
- Easy Install plug & play relaybox with potential free contacts
  - Easy Install plug & play RS232/RS422 control kit
  - Easy Install plug & play RS232/RS422 with IP control kit
- Keyswitch

## Accessories - installation

- Ceiling brackets (100 cm.)
- Set extension brackets (75 cm.)
- Set extension brackets (30 cm.)

## Dynamic Electrol - mounting bracket included



## Warranty

Projecta provides a limited 5 year warranty on the Elpro Concept range and a limited 2 year warranty on all other products. The warranty on the motor of electrical screens is 5 year. All warranties are in effect beginning the date the product was invoiced by Projecta.